

CP Series

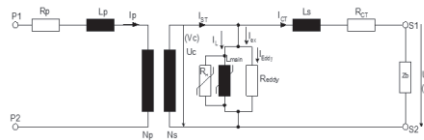


CP range of current transformers are compact—smaller than other models with the current ratio of the transformer is small. Clamshell-style terminal cover is well protected by the second terminal. With related accessories you can use Din rail mounting a current from 5A to 3000A.

Features

- Three built in fixing methods: Panel/Din Rail/Busbar
- Built in hinged terminal cover
- Compact design
- Primary current from 5A to 3000A

Circuit connection diagram



Applications

- Current measurement, monitoring and protection for electrical wiring and equipment.
- Current and power measurement for electric motors, lighting, air compressor, heating and ventilation system, air-condition equipment and automation-control system.
- Current, power and energy monitoring device.
- Relay protection device.

Technique Index

| Electrical Parameter | |
|-----------------------|-----------------|
| Frequency | 50/60Hz |
| Rated Input | 5A-3000A |
| Measuring range | 5% In - 120% In |
| Rated Output | 1A, 5A |
| Rated Voltage | 0.72KV(AC) |
| Dielectric strength | 3.0KV/1mA/1min |
| Insulation Resistance | DC500V/100MΩmin |

| Mechanical Parameter | |
|----------------------|-----------------|
| Case | PC /UL94-V0 |
| Bobbin | PBT |
| Core | Silicon steel |
| Construction | Screw |
| Operating Temp | - 25°C ~ + 75°C |
| Operating Humidity | ≤ 85% |
| Output Connection | Terminal |

Standard

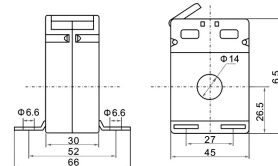
IEC61869-2, EN60044-1, VDE0414-44-1, GB1208-2006

Technical parameter



CP-45/14

| TYPE | Ratio(A) | Burden(VA) | | |
|----------|----------|------------|-----------|-----------|
| | | Class:0.5 | Class:1.0 | Class:3.0 |
| CP-45/14 | 30/5A | - | - | 1 |
| | 40/5A | - | - | 1 |
| | 50/5A | - | 1 | 1 |
| | 60/5A | - | 1.5 | 2.5 |
| | 80/5A | 1.5 | 1.5 | 3.75 |
| | 100/5A | 1.5 | 2.5 | 5 |



CP Series

Technical parameter



CP-62/B

| TYPE | Ratio(A) | Burden(VA) | | |
|---------|----------|-----------------|-----------|-----------|
| | | Class:0.2s/0.5s | Class:0.5 | Class:1.0 |
| CP-62/B | 5/5A | 2.5 | 2.5 | 2.5 |
| | 10/5A | 2.5 | 2.5 | 2.5 |
| | 15/5A | 2.5 | 2.5 | 2.5 |
| | 20/5A | 2.5 | 2.5 | 2.5 |
| | 25/5A | 2.5 | 2.5 | 2.5 |
| | 30/5A | 2.5 | 2.5 | 2.5 |
| | 40/5A | 2.5 | 2.5 | 2.5 |
| | 50/5A | 2.5 | 2.5 | 2.5 |
| | 60/5A | 2.5 | 2.5 | 2.5 |
| | 75/5A | 2.5 | 2.5 | 2.5 |
| | 100/5A | 2.5 | 2.5 | 2.5 |
| 150/5A | 2.5 | 2.5 | 2.5 | |

Technical parameter



CP-62/20

| TYPE | Ratio(A) | Burden(VA) | | |
|----------|----------|-----------------|-----------|-----------|
| | | Class:0.2s/0.5s | Class:0.5 | Class:1.0 |
| CP-62/20 | 30/5A | - | - | 2.5(4T) |
| | 40/5A | - | - | 2.5(3T) |
| | 50/5A | - | - | 2.5(3T) |
| | 60/5A | - | - | 2.5(2T) |
| | 75/5A | - | - | 1.5 |
| | 80/5A | - | - | 2.5 |
| | 100/5A | 2.5 | 2.5 | 2.5 |
| | 150/5A | 2.5 | 2.5 | 3.75 |
| | 200/5A | 2.5 | 3.75 | 5 |

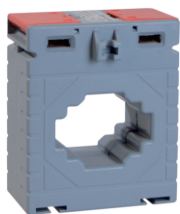
Technical parameter



CP-62/30

| TYPE | Ratio(A) | Burden(VA) | | |
|----------|----------|-----------------|-----------|-----------|
| | | Class:0.2s/0.5s | Class:0.5 | Class:1.0 |
| CP-62/30 | 50/5A | - | - | 2.5(2T) |
| | 60/5A | - | - | 2.5(2T) |
| | 75/5A | - | - | 1.5 |
| | 100/5A | 2.5 | 2.5 | 2.5 |
| | 150/5A | 2.5 | 2.5 | 3.5 |
| | 200/5A | 2.5 | 3.5 | 5 |
| | 250/5A | 2.5 | 5 | 5 |
| | 300/5A | 2.5 | 5 | 5 |
| | 400/5A | 3.75 | 5 | 5 |

Technical parameter



CP-62/40

| TYPE | Ratio(A) | Burden(VA) | | |
|----------|----------|-----------------|-----------|-----------|
| | | Class:0.2s/0.5s | Class:0.5 | Class:1.0 |
| CP-62/40 | 60/5A | - | - | 2.5(2T) |
| | 75/5A | - | - | 2.5(2T) |
| | 100/5A | - | - | 1 |
| | 150/5A | - | - | 2.5 |
| | 200/5A | 2.5 | 2.5 | 3.75 |
| | 250/5A | 2.5 | 2.5 | 5 |
| | 300/5A | 2.5 | 5 | 6 |
| | 400/5A | 2.5 | 5 | 6 |

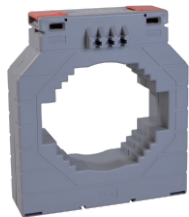
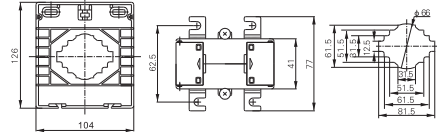
CP Series



CP-104/80

Technical parameter

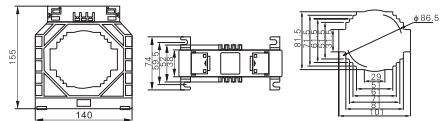
| TYPE | Ratio(A) | Burden(VA) | | |
|-----------|----------|-----------------|-----------|-----------|
| | | Class:0.2s/0.5s | Class:0.5 | Class:1.0 |
| CP-104/80 | 600/5A | 2.5 | 7.5 | 10 |
| | 750/5A | 2.5 | 7.5 | 10 |
| | 800/5A | 5 | 10 | 10 |
| | 1000/5A | 7.5 | 10 | 15 |
| | 1200/5A | 10 | 10 | 15 |
| | 1250/5A | 10 | 10 | 15 |
| | 1500/5A | 10 | 15 | 15 |
| | 1600/5A | 10 | 15 | 15 |
| | 2000/5A | 10 | 15 | 15 |



CP-140/100

Technical parameter

| TYPE | Ratio(A) | Burden(VA) | | |
|------------|----------|-----------------|-----------|-----------|
| | | Class:0.2s/0.5s | Class:0.5 | Class:1.0 |
| CP-140/100 | 800/5A | 5 | 10 | 10 |
| | 1000/5A | 5 | 10 | 15 |
| | 1200/5A | 10 | 15 | 15 |
| | 1250/5A | 10 | 15 | 15 |
| | 1500/5A | 15 | 15 | 15 |
| | 1600/5A | 15 | 15 | 15 |
| | 2000/5A | 15 | 15 | 15 |
| | 2500/5A | 15 | 15 | 15 |
| | 3000/5A | 15 | 15 | 15 |



Accuracy class characteristics:

